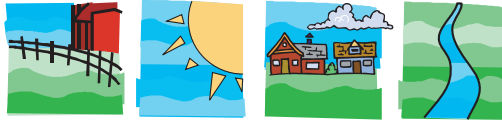


—SHOP— Henry County, IL



Where You Long To Be...

HELP US INCREASE COUNTY SALES!

The Benefits to You of Spending in Your Community

Personal Service: local merchants want you to be satisfied and to keep returning –whether you are shopping for yourself or for your family or friends, no matter if it's a car, batteries or dog food.

Quality: When you do buy locally, you know the reputation of the business. They will make it right for you

Employment: local merchants employ local people, creating jobs for you, your friends and neighbors and your children too. They support local causes as a benefit to the community

\$5,000,000 more in 2007!!!

Spend \$5 a week or \$20 a month in Henry County and be part of a huge increase in local sales (bringing the sales tax back to our County and our communities)!!

(Based on 20,050 households in Henry County)

Ways to spend \$20 each month:

- * oil change
- * one month's internet service
- * gas
- * pizza or a movie for you and a friend (double the number/ and double the benefits!)
- * Christmas gifts – shop all Year long and be ready early!

Ways to spend \$5 each week:

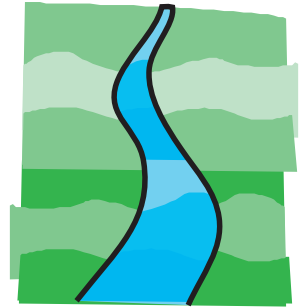
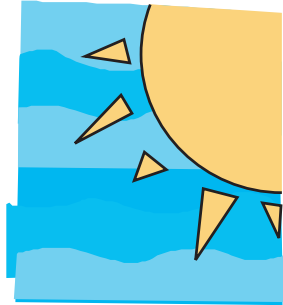
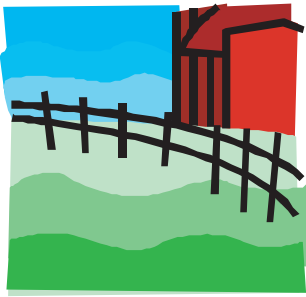
- * cat food or dog food
- * lunch (for you!)
- * cards and stamps
- * bait to fish
- * ice cream
- * batteries/lightbulbs

KEEP YOUR DOLLARS LOCAL: Dollars spent in your community stay in your community and circulate many times. They support schools and help to keep property taxes lower. Dollars that go out of the community do not return. Please help support our community. Our future depends on it!

A program sponsored by
the Henry
County Economic
Development Partnership.



—SHOP— Henry County, IL



Where You Long To Be...

Alpha, Andover, Annawan, Atkinson, Bishop Hill, Cambridge, Colona, Galva,
Geneseo, Hooppole, Kewanee, Orion and Woodhull

A program sponsored by the Henry
County Economic Development Partnership.

